

# OTDR Report (1310 nm (9 μm))

## General Information

File name:	18_1310.trc	Customer:	ADNOC
Test date:	14-Feb-24	Company:	PAN ARABIA
Test time:	4:18 PM	Fiber ID:	18
Cable ID:	FAR5 to SS6A (C) A (B-A)		
Job ID:	0500831		
Comments:	END TO END TEST		

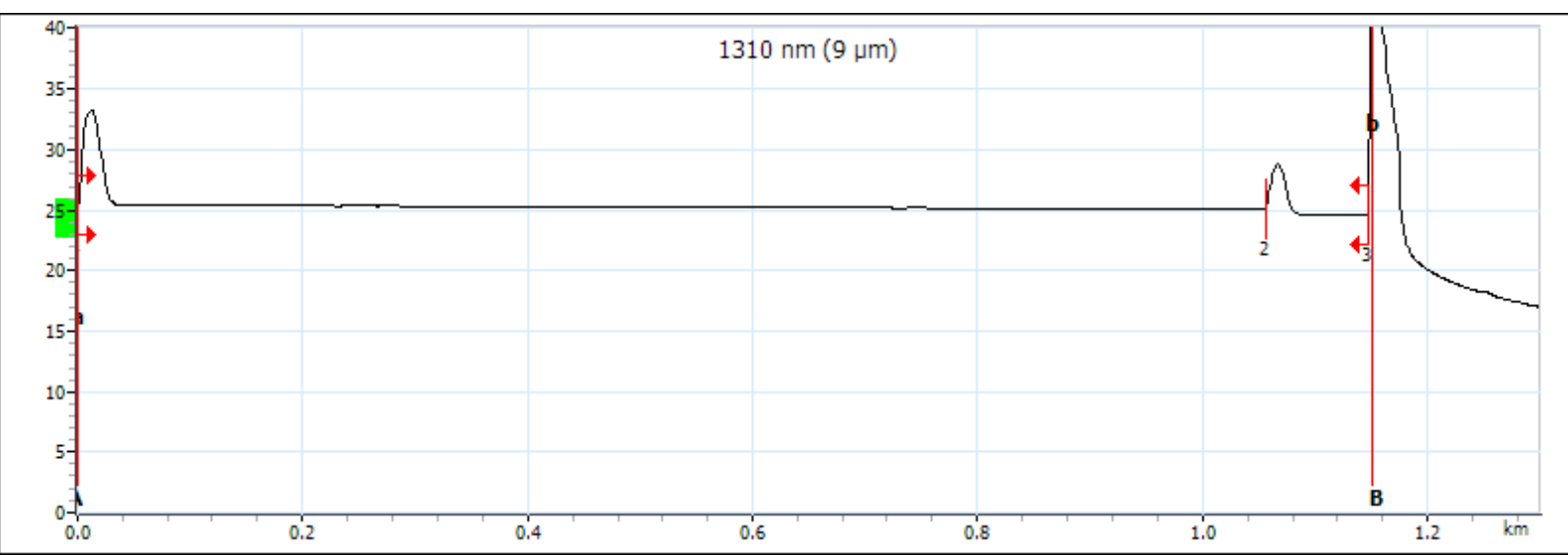
## Locations

	Location A	Location B
Location	SS6A	FAR5
Operator	PANDA	HABEEB
Model	MAX-720C-Q1-EA-EI	
Serial number	1206159	
Calibration date	29-Mar-23 (UTC)	

## Results

Span length:	1.1474 km	Average loss:	0.701 dB/km	Injection level:	25.4 dB
Span loss:	0.805 dB	Average splice loss:	---		
Span ORL:	39.34 dB	Maximum splice loss:	---		

## Graph



## Markers

Marker	Position (km)	Value (dB)	A-B LSA attenuation:	0.777 dB/km	A-B average loss:	-13.830 dB/km
a	0.0000	25.420	A-B LSA loss:	0.894 dB	4-point Event Loss:	-16.311 dB
A	0.0000	25.420	A-B ORL:	37.61 dB	Maximum reflectance:	-41.6 dB
B	1.1502	41.328				
b	1.1502	41.328				

# OTDR Report (1310 nm (9 μm))

## Event Table

Type	No.	Pos./Length (km)	Loss (dB)	Reflectance (dB)	Attenuation (dB/km)	Cumulative (dB)
First Connector	1	0.0000	---	-43.7		0.000
Section		1.0561	0.360		0.341	0.360
Reflective	2	1.0561	0.418	-52.7		0.778
Section		0.0913	0.027		0.297	0.805
Reflective	3	1.1474	---	> -23.8		0.805

## Macrobend

Position (km)	Delta Loss (dB)

## Pass/Fail Thresholds

	1310 nm (9 μm)

## Test Parameters

	A → B
Wavelength (nm)	1310 nm (9 μm)
Range (km)	1.3000
Pulse (ns)	100
Duration (s)	5

## Test Settings

	A → B	Macrobend Wavelengths	Macrobend Delta Loss (dB)
IOR	1.467700		
Backscatter (dB)	-79.45		
Helix factor (%)	0.00		
Splice loss detection threshold (dB)	0.020		
Reflectance detection threshold (dB)	-72.0		
End-of-fiber detection threshold (dB)	5.000		

# OTDR Report (1550 nm (9 μm))

## General Information

File name:	18_1550.trc	Customer:	ADNOC
Test date:	14-Feb-24	Company:	PAN ARABIA
Test time:	4:18 PM	Fiber ID:	18
Cable ID:	FAR5 to SS6A (C) A (B-A)		
Job ID:	0500831		
Comments:	END TO END TEST		

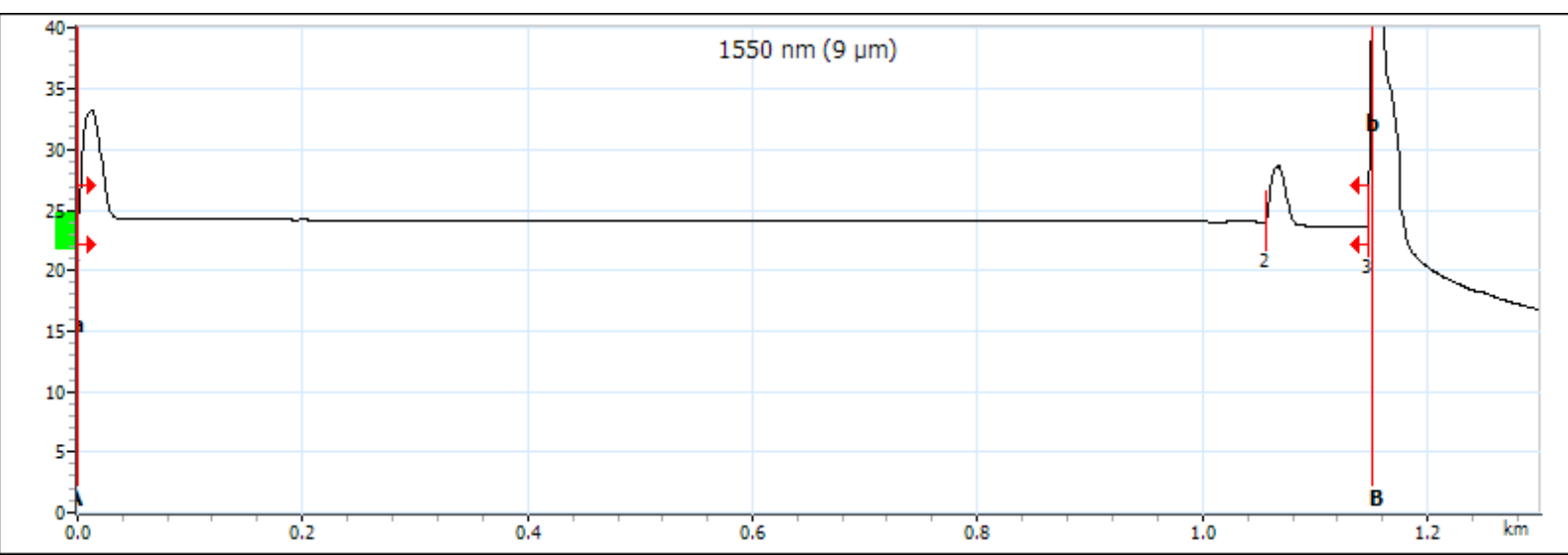
## Locations

	Location A	Location B
Location	SS6A	FAR5
Operator	PANDA	HABEEB
Model	MAX-720C-Q1-EA-EI	
Serial number	1206159	
Calibration date	29-Mar-23 (UTC)	

## Results

Span length:	1.1472 km	Average loss:	0.489 dB/km	Injection level:	24.2 dB
Span loss:	0.561 dB	Average splice loss:	---		
Span ORL:	41.46 dB	Maximum splice loss:	---		

## Graph



## Markers

Marker	Position (km)	Value (dB)	A-B LSA attenuation:	0.640 dB/km	A-B average loss:	-14.545 dB/km
a	0.0000	24.706	A-B LSA loss:	0.736 dB	4-point Event Loss:	-16.961 dB
A	0.0000	24.706	A-B ORL:	<37.56 dB	Maximum reflectance:	>-27.7 dB
B	1.1502	41.437				
b	1.1502	41.437				

# OTDR Report (1550 nm (9 μm))

## Event Table

Type	No.	Pos./Length (km)	Loss (dB)	Reflectance (dB)	Attenuation (dB/km)	Cumulative (dB)
First Connector	1	0.0000	---	-43.8		0.000
Section		1.0563	0.201		0.191	0.201
Reflective	2	1.0563	0.337	-53.0		0.538
Section		0.0909	0.023		0.256	0.561
Reflective	3	1.1472	---	> -24.3		0.561

## Macrobend

Position (km)	Delta Loss (dB)

## Pass/Fail Thresholds

	1550 nm (9 μm)

## Test Parameters

	A → B
Wavelength (nm)	1550 nm (9 μm)
Range (km)	1.3000
Pulse (ns)	100
Duration (s)	5

## Test Settings

	A → B	Macrobend Wavelengths	Macrobend Delta Loss (dB)
IOR	1.468325		
Backscatter (dB)	-81.87		
Helix factor (%)	0.00		
Splice loss detection threshold (dB)	0.020		
Reflectance detection threshold (dB)	-72.0		
End-of-fiber detection threshold (dB)	5.000		